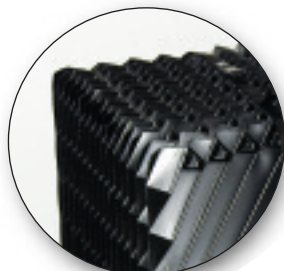


Flow Rates up to 30 GPM

Stainless Steel Oil-Water Separator Cabinet

Up to 1000 sq. ft. of Coalescing Surface Area

High-Output Ozone Treatment



■ **Top-of-the-line, Ozone Generator** injects bacteria-and-odor-killing ozone using a mixing procedure that ensures up to 99% contact with the waste stream.

■ **1/2 hp industrial Sump Pump** constantly recirculates water. Centrifugal pump includes check valve, level control float switches and strainer basket.

■ **Carbasorb Filter** with up to 300 lbs of degassed, virgin activated carbon, removes through adsorption heavy metals, pesticides and solvents, including benzenes, diesel fuels, acetones and other hydrocarbons.

■ **Convenient located and clearly labeled Hose Connections** are for recycled water outlet; automatic rainwater overflow protection; fresh-water inlet for water level control; and fresh-water bypass for rinse-quality water.

■ **Clear piping and Water Flow Meter** allow for easy monitoring and adjusting of the flow rate.

▲ The genius of the system is the maze in the oil-water separator. Up to 1,000 sq.ft. of oleophilic (oil-loving) **Inclined Coalescing Plates** are meshed together forcing the waste stream to slowly change course hundreds of times. This constant shifting of the flow path causes oil droplets to group and float and solids to sink. The plates, made of polypropylene, are held together by adjustable straps, which can be used to lift the pack out of the stainless steel tank for cleaning.

■ **Tightly-woven polyester Cartridge Filter**, with 500 sq.ft. of filtration area, prevents dirt and other solids larger than 5-20 microns from returning to the pressure washer and damaging the high-pressure pump. Filter housing is easily opened so elements can be cleaned and reused.

■ **Nearly 800 lbs. of a special Multi-Media Blend** of gravel, sand and anthracite provide advanced filtration of suspended solids to as fine as 40 microns; filter backwash mode is aided by a finger-like lateral assembly which prevents channeling.

■ **Optional automated ORP/pH Controller** monitors and injects pH balancing agent and oxidizer for optimum water treatment and odor control.

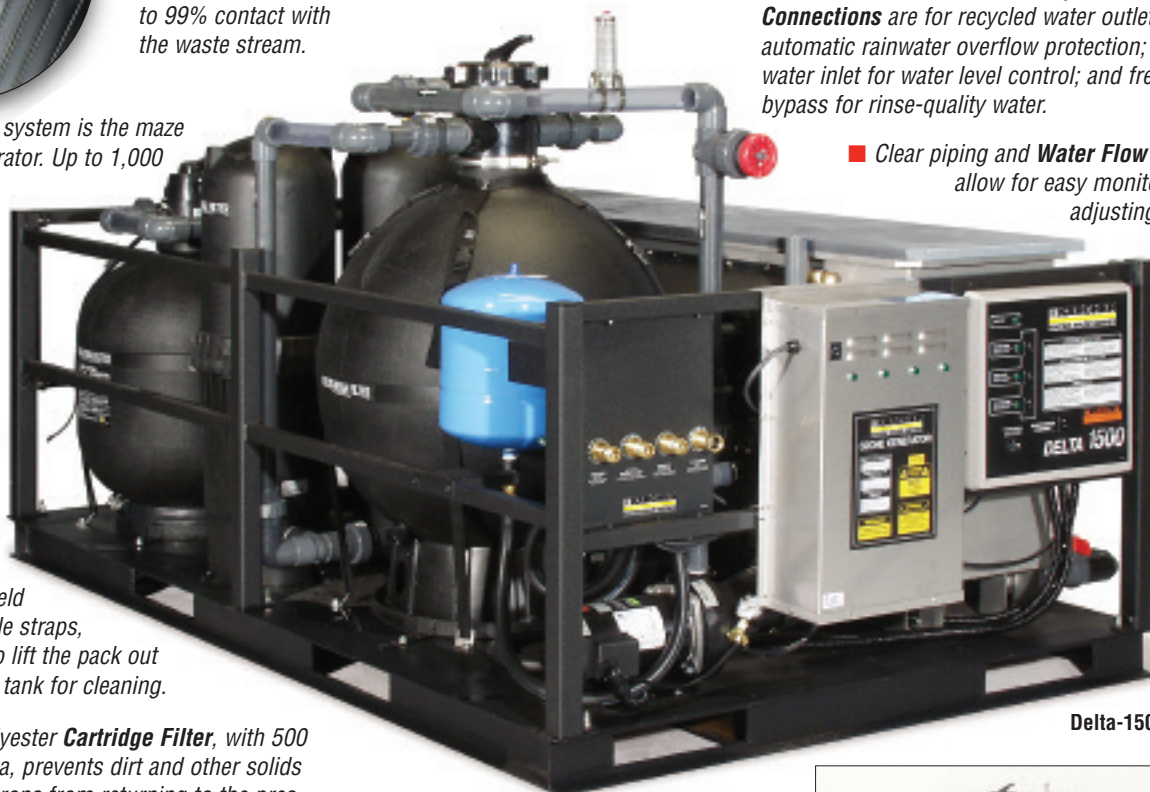
■ **Easy to read NEMA 4 Control Panel** features: 24-hour filter timer for passing ozonated water through the filters during periods of shutdown; on-off and override switches for backwashing; and hour meter for service records.

■ **Self-flushing Transfer Pump** maintains pressure of 20 PSI in surge tank so water is always ready for use by pressure washer.



Delta-3000A

■ **Made of polypropylene and stainless steel the Oil Skimmer** has an adjustable baffle for skimming free oil. Oil is collected in skimmer container for disposal and/or recycling.



Delta-1500A



DELTA

Compact, Self-Contained, Wash-Water Treatment and Recycling System

Flow Rate up to 30 GPM | Up to 1000 sq. ft. of Coalescing Surface | Up to 500 sq. ft. of Cartridge Filter | Ozone Treatment

WHY CHOOSE WATER MAZE'S DELTA

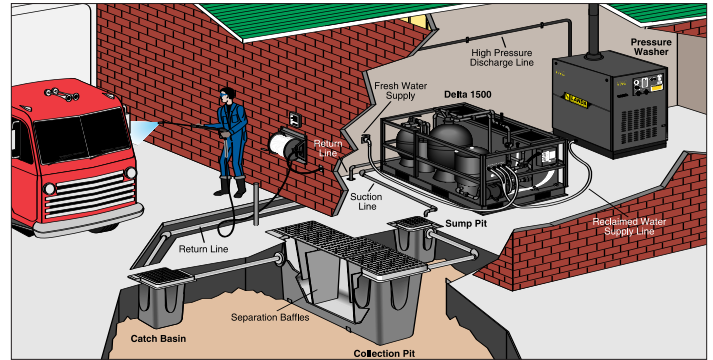
The Delta wash-water recycling systems are ideal when a wash facility is already equipped with a collection pit or pre-treatment system.

With flow rates of up to 30 GPM, the Delta is self-contained and has a low profile so it can be conveniently and relatively quickly installed inside a building or next to a wash pad.

As with other Water Maze systems, the Delta features the proprietary "maze" design that uses oleophilic—oil-loving—coalescing plates, which are meshed together and inclined at just the right angle to produce highly effective oil-water separation.

There are two models of the Delta for flow rates of 15 and 30 GPM.

The Delta has a stainless steel oil-water separator and all of the tanks and filters are connected with UV-resistant Schedule 80 PVC pipe. The entire unit is mounted on a rugged, welded-steel skid with stainless steel studs



and bolts along with a weather-resistant powder coat finish. Odors are kept in check by a high-output Series 400 ozone generator with four UV lamps. Electrical connections are in a NEMA 4 water-tight control box.

DELTA Specifications

| MODEL | DELTA-1500A,B,C | DELTA-3000A,B,C |
|---|---|---|
| Maximum Flow | 1-15 GPM | 1-30 GPM |
| Oil-Water Separator Capacity | 125 gal. | 250 gal. |
| Electrical: Volts, Phase, Amps | 230V 1ph 16A, 230V 3ph 10A, 460V 3ph 8A | 230V 1ph 29A, 230V 3ph 16A, 460V 3ph 9A |
| Sump Pump | 1/2 HP Centrifugal | 1/2 HP Submersible |
| Filter Pump | 1/2 - 3/4 HP | 2 HP |
| Transfer Pump Centrifugal | 3/4 - 1 1/2 HP | 2 HP |
| Oil Skimmer | Continual Flow, Decanting | Continual Flow, Decanting |
| Ozone Generator | Series 400, 4 UV Lamps | Series 400, 4 UV Lamps |
| Coalescing Surface Area | 500 sq.ft. | 1000 sq.ft. |
| Media Filter | 600 lbs. | 800 lbs. |
| Carbon Filter (degassed) | 200 lbs. | 300 lbs. |
| Cartridge Filter Surface Area (20 micron) | 500 sq. ft. | 500 sq. ft. |
| Dimensions | 8'L x 5'W x 4'H | 8'L x 10'W x 4'H |
| Ship Weight (approx) | 2,420 lbs. | 4,200 lbs. |

Distributed by:

OPTIONS INCLUDE: Upgrade to stainless steel platform; advanced digital ORP/pH Controller for automated wastewater management; extra-high output corona discharge (CD) ozone generator

See your Water Maze Dealer for part numbers and pricing.

waterMaze
WATER TREATMENT SYSTEMS

8.720-025.0 Rev 7/07 Tel 800-347-6116 Fax 800-535-9164 info@wmaze.com
Specifications and product descriptions subject to change without notice. © 2007

www.wmaze.com